

MAP OF
LAKE - TERRACE
 ON LAKE PONTCHARTRAIN
 NEW ORLEANS, LA.

BOARD OF LEVEE COMMISSIONERS
 OF THE
 ORLEANS LEVEE DISTRICT
 LAKEFRONT DEVELOPMENT
 ZONE NO.3

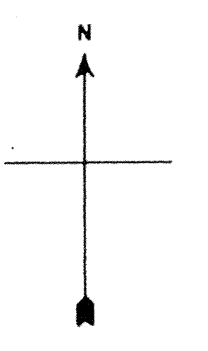
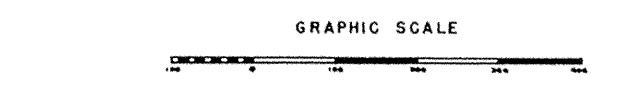
WILLIAM S. WIEDORN
 CITY PLANNER &
 LANDSCAPE ARCHITECT

LOUIS J. ROUSSEL
 PRESIDENT

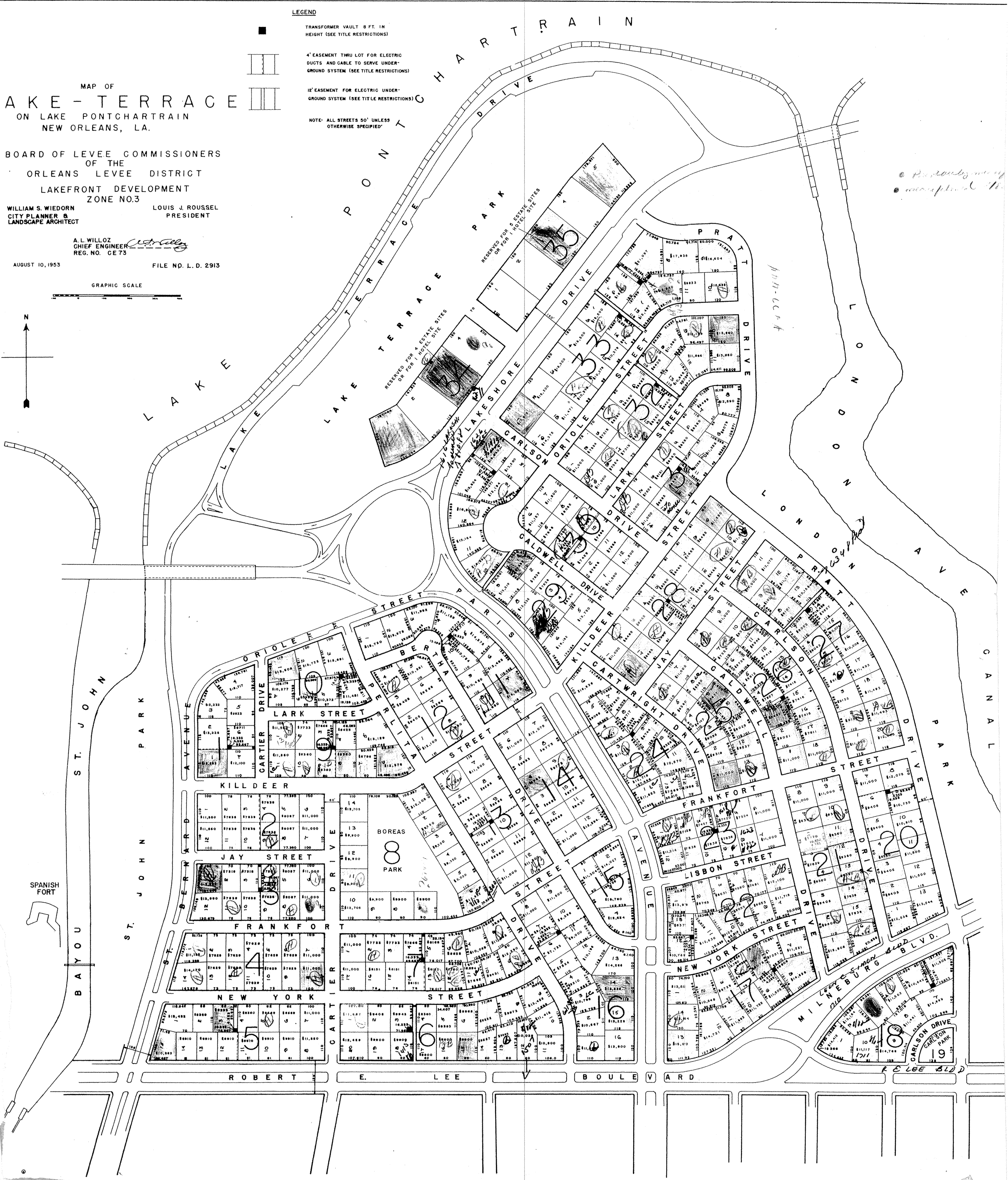
A. L. WILLOZ
 CHIEF ENGINEER
 REG. NO. CE 73

AUGUST 10, 1953

FILE NO. L. D. 2913



- LEGEND**
- TRANSFORMER VAULT 8 FT. IN HEIGHT (SEE TITLE RESTRICTIONS)
 - ▬ 4" EASEMENT THRU LOT FOR ELECTRIC DUCTS AND CABLE TO SERVE UNDERGROUND SYSTEM (SEE TITLE RESTRICTIONS)
 - ▬ 12" EASEMENT FOR ELECTRIC UNDERGROUND SYSTEM (SEE TITLE RESTRICTIONS)
- NOTE: ALL STREETS 50' UNLESS OTHERWISE SPECIFIED



Handwritten notes:
 • ...
 • ...